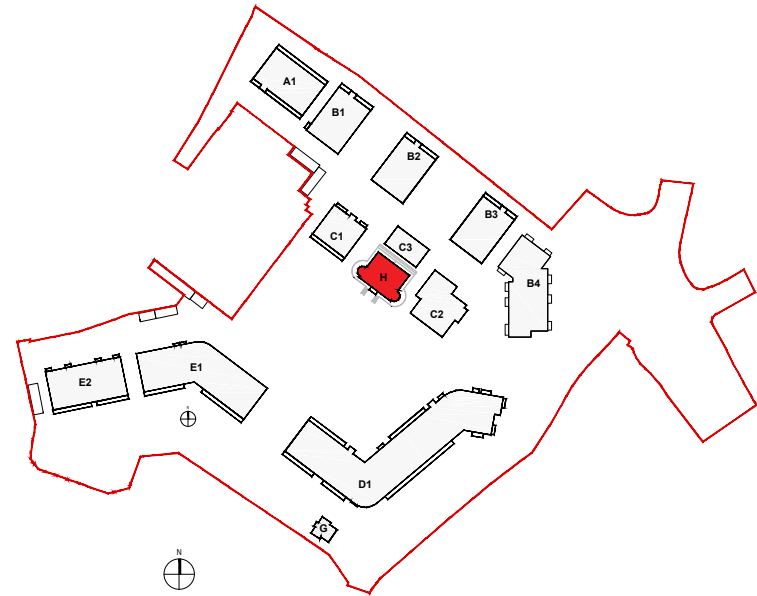




EXISTING NORTH ELEVATION - St. Teresa's House

- NOTE:
- ORIGINAL SURVEY INFORMATION FROM MURPHY SURVEYS
  - DRAWING ASSEMBLED BY OMP
  - DRAWINGS TO BE READ IN CONJUNCTION WITH CONSERVATION ARCHITECTS REPORT



Revision Description	Date	Rev. No.	Issued by	<div><div>o mahony pike</div><div>architecture urban design email: info@omahonypike.com tel: +353 1 202 7400 fax: +353 1 283 0822 www.omahonypike.com</div><div>Dublin The Chapel Mount St. Anne's Milltown, Dublin 6 D06 XN52 Ireland</div><div>Cork 26 South Mall Cork City Co. Cork T12 R2RV Ireland</div></div>		Project No.:	1706A	Scale @ A1:	1:50
						Project Lead:	DM	Date Printed:	17.12.2021
						Drawn By:	CF/CPI	Current Rev.:	
						Model No.:	1706A-OMP-PS01-ZZ-DR-A-2400	Purpose:	PLANNING
						Project:	Proposed SHD		
						Location:	Lands at 'St. Teresa's', Temple Hill, Monkstown, Blackrock, Co. Dublin		
						Client:	Oval Target Limited		
						Drawing Title:	Existing North Elevation - St. Teresa's House		
						Drawing No.:	1706A-OMP-PS01-ZZ-DR-A-2401		
Figured dimensions only to be used. This drawing is copyright of O'Mahony Pike Architects Ltd. All information is shared as per approved use in accordance with BS1192(2007) + A2(2016), Table 5; Standard Codes for Suitability of Models and Documents. If 'Information Approval Check' is empty, this information has been shared at S0 - WIP.				Suitability - Checked By - Date					